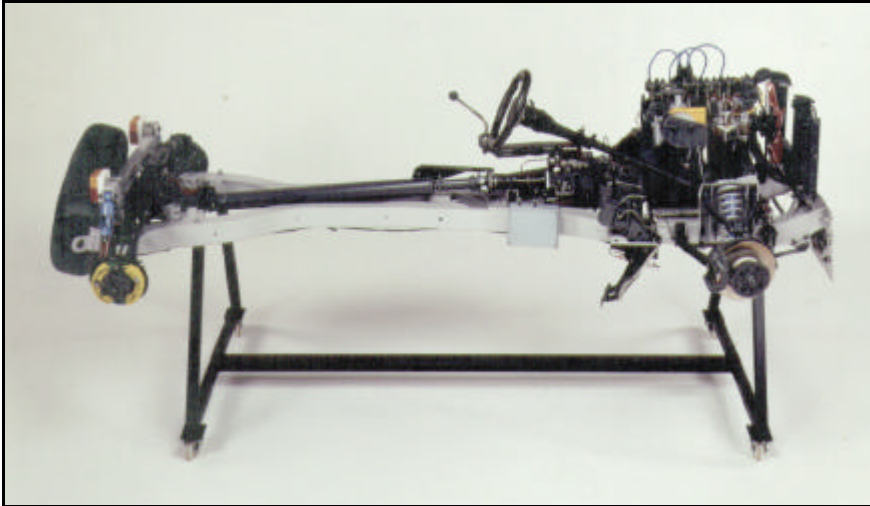


SECTIONED INSTRUCTIONAL UNITS



SECTIONED MANUALLY OPERATED VEHICLE CHASSIS (P2199)

INTRODUCTION

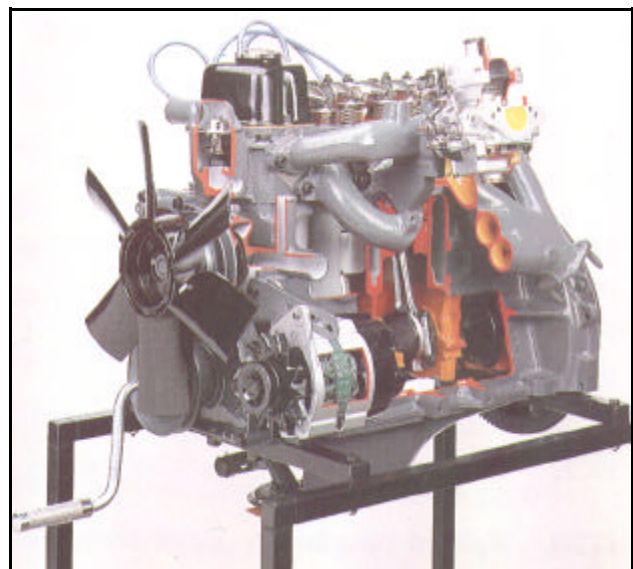
Cussons Sectioned Instructional Units have been designed to enable the maximum educational value to be obtained from actual equipment in use today.

The range comprises assemblies and components from motor vehicles, refrigeration and air conditioning plant, pumps, valves and steam equipment.

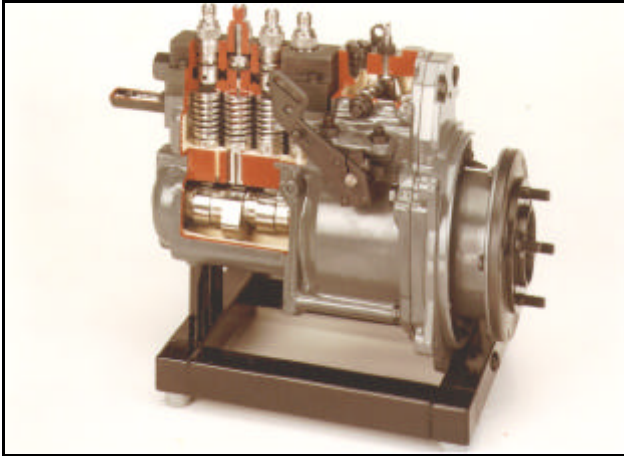
Where necessary, units are painted in contrasting colours to show the sectioning clearly and highlight points of interest.

MOTOR VEHICLES ENGINES AND COMPONENTS

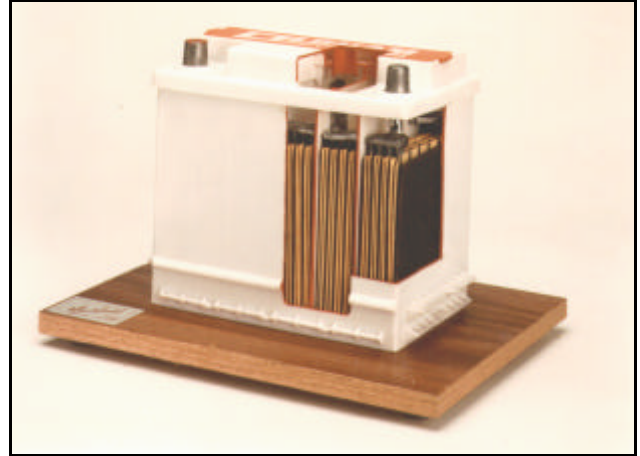
- P2199 Sectioned Vehicle Chassis – manually operated
- P2199/M Sectioned Vehicle Chassis – motorised
- P2200 Sectioned 4-Cylinder, 4-Stroke S.I. Engine
- P2200/M As above – motorised
- P2201 Sectioned 4-Cylinder, 4-Stroke C.I. Engine
- P2201/M As above – motorised
- P2204 Sectioned Single-Cylinder, 4-Stroke S.I. Engine
- P2205 Sectioned Single-Cylinder, 4-Stroke C.I. Engine
- P2208 Sectioned V8 S.I. Engine – manually operated
- P2208/M Sectioned V8 S.I. Engine – motorised



**4-CYLINDER, 4-STROKE,
SPARK IGNITED ENGINE (P2200)**

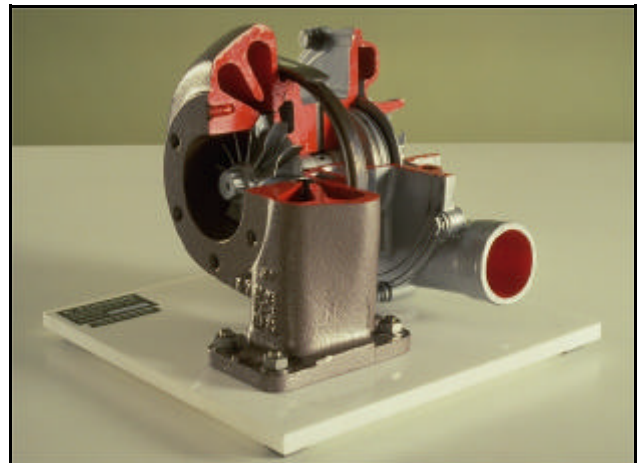


SECTIONED DIESEL INJECTION PUMP (P2217)



SECTIONED BATTERY (P2251)

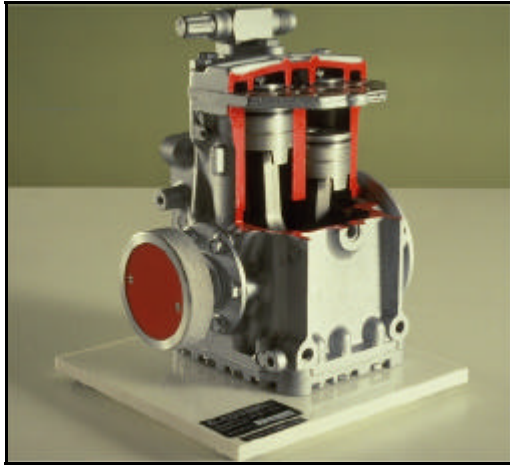
- P2209 Sectioned V6 S.I. Engine – manually operated
- P2209/M Sectioned V6 S.I. Engine – motorised
- P2210 Sectioned 6 Cylinder In-line Turbocharged Diesel Engine – motorised
- P2211 Sectioned 4-Cylinder 4-Stroke S.I. Engine & Gearbox – manually operated
- P2211/M Sectioned 4-Cylinder 4-Stroke S.I. Engine & Gearbox – motorised
- P2212 Sectioned 4-Cylinder 4-Stroke C.I. Engine & Gearbox – manually operated
- P2212/M Sectioned 4-Cylinder 4-Stroke C.I. Engine & Gearbox – motorised
- P2213 Sectioned 4-Cylinder 4-Stroke Transverse S.I. Engine & Gearbox – manually operated
- P2213/M Sectioned 4-Cylinder 4-Stroke Transverse S.I. Engine & Gearbox – motorised
- P2214 Sectioned Carburettor – constant depression
- P2215 Sectioned Turbocharger
- P2216 Sectioned Carburettor – fixed venturi
- P2217 Sectioned Diesel Injection Pump – 4 cyl. in-line
- P2218 Sectioned Diesel Injection Pump – distributor
- P2219 Sectioned Diesel Injector – set of 4
- P2220 High Tension Distributor – exploded
- P2221 Sectioned Oil Filter
- P2222 Sectioned Oil Pump – automobile engine
- P2223 Sectioned Piston with Rings – automobile engine
- P2224 Sectioned Water Pump – automobile engine
- P2225 Sectioned Thermostat
- P2226 Sectioned Mechanical Fuel Pump



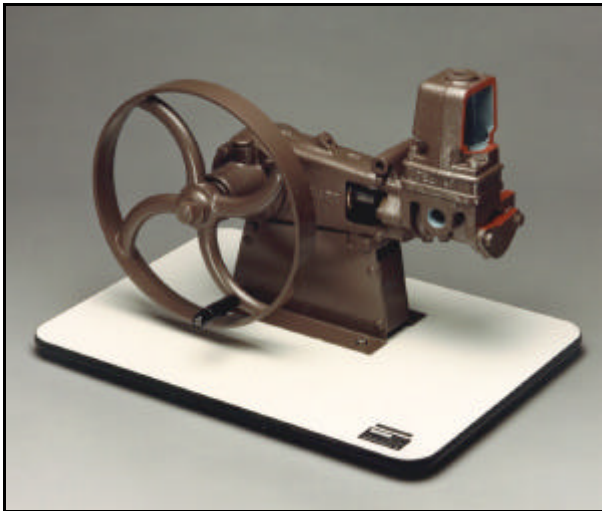
SECTIONED TURBOCHARGER (P2215)



SECTIONED REAR AXLE (P2231)



**SECTIONED REFRIGERATION COMPRESSOR
(P2255)**



**SECTIONED RECIPROCATING WATER PUMP
(P2266)**



SECTIONED VANE PUMP (AIR) (P2267)

- P2228 Sectioned Shock Absorber
- P2230 Sectioned Disc Brake and Caliper
- P2231 Sectioned Rear Axle with differential and disc brakes
- P2232 Sectioned Overdrive
- P2233 Sectioned Torque Converter
- P2234 Sectioned Automatic Gearbox
- P2235 Sectioned Gearbox – manual
- P2236 Sectioned Final Drive – automobile
- P2237 Sectioned Leading/Trailing Shoe Drum Brake
- P2238 Working Hydraulic Disc/Drum Brake System
- P2239 Sectioned Rack & Pinion Steering Box
- P2240 Sectioned Universal Joint
- P2241 Sectioned Radiator – automobile
- P2242 Sectioned Twin Leading Shoe Drum Brake
- P2243 Sectioned Steering Mechanism
- P2244 Working Ignition System
- P2245 Sectioned Ignition Coil
- P2246 Sectioned Starter Motor
- P2247 Sectioned Dynamo
- P2248 Sectioned Alternator
- P2249 Sectioned Voltage Regulator
- P2250 Sectioned Spark Plug – set of 4
- P2251 Sectioned Battery
- P2252 Sectioned Exhaust Silencer
- P2253 Sectioned Fuel Tank Float Mechanism
- P2254 Sectioned Car Wheel & Tyre

REFRIGERATION AND AIR CONDITIONING

- P2255 Sectioned Refrigeration Compressor
- P2256 Board of Sectioned Refrigeration Components
- P2257 Sectioned Hermetic Refrigeration Unit
- P2258 Sectioned Air Conditioning Unit

PUMPS

- P2265 Sectioned Centrifugal Water Pump (motorised)
- P2266 Sectioned Reciprocating Water Pump
- P2267 Sectioned Vane Pump (air)
- P2268 Sectioned Diaphragm Pump (air)
- P2269 Sectioned Gear Pump (oil power hydraulics)
- P2270 Sectioned Swash Plate Pump (oil power hydraulics)
- P2271 Sectioned Mono Pump

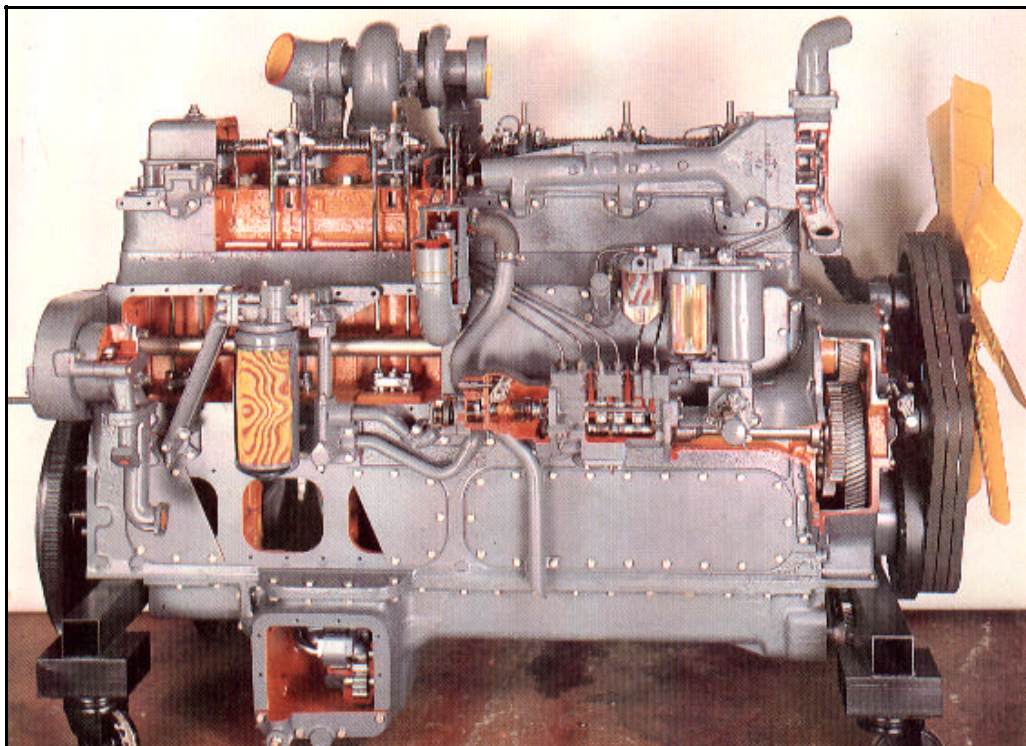
VALVES AND STEAM PLANT

P2285	Sectioned Gate Valve
P2286	Sectioned Globe Valve
P2287	Board of Sectioned Pipe Fittings
P2288	Sectioned Reducing Valve (air or gas)
P2289	Sectioned Rotary Ball Valve
P2295	Sectioned Steam Trap
P2296	Sectioned Steam Separator
P2297	Sectioned Steam Ejector
P2298	Sectioned Pressure Relief Valve (steam)
P2299	Sectioned Condenser
P2300	Sectioned Steam Engine
P2301	Sectioned Steam Injector



**SECTIONED STEAM SEPARATOR
(P2296)**

In addition to the listed products, Cussons can undertake to section a wide range of equipment to meet specific requirements.



**SECTIONED CATERPILLAR D 8 K ENGINE AS USED IN HEAVY
EARTH MOVING EQUIPMENT**

Cussons Technology Ltd.

102 Great Clowes Street, Manchester M7 1RH, England

Tel. +(44)161 833 0036

Fax. +(44)161 834 4688

E-mail: sales@cussons.co.uk Web: www.cussons.co.uk

The Company may alter detail specifications at its discretion and without notice, in line with its policy of continuous development.